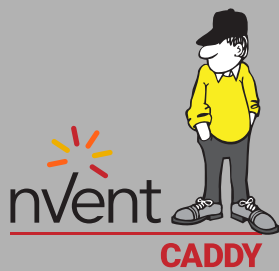
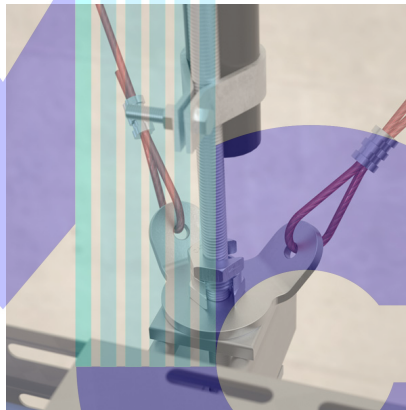
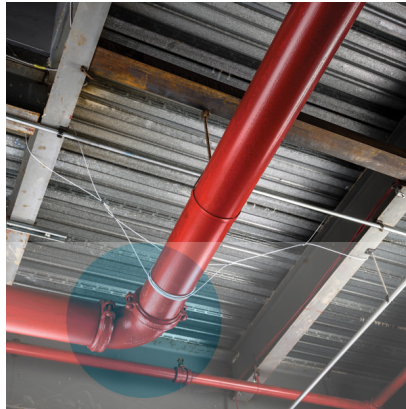


FIXING, FASTENING AND SUPPORT PRODUCTS

FEATURED PRODUCTS



Cable Bracing

nVent CADDY cable bracing is an ideal alternative to rigid bracing for fire sprinkler systems when brace lengths greater than 19' - 8" (6 m) are required or when confined/crowded spaces make rigid systems difficult to install. The system includes pre-stretched steel cable, attachment fittings, oval sleeves and related tools. The system can also be used to brace electrical, mechanical and plumbing systems.

- Color-coated cable conforms to NFPA® 13 requirements and makes it highly visible and easier to identify cable sizes
- UL® Listed
- Made in the USA



Cable Spool



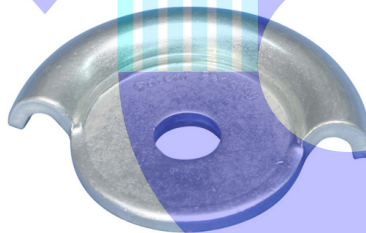
Oval Sleeve



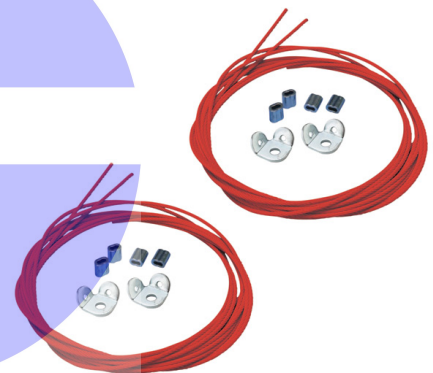
Universal Restraint Clip



Universal Restraint Clip, Retrofit



No Pry Clip



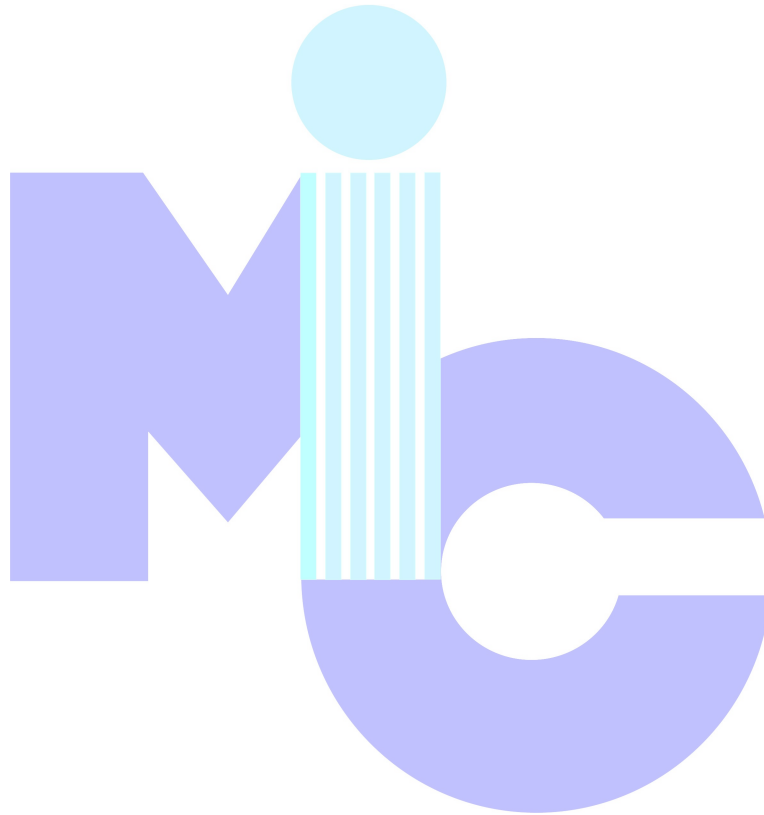
URC Attachment Kit



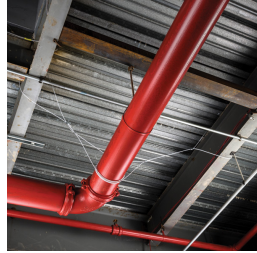
Cable Cutter



Swaging Tools



Cable Spool



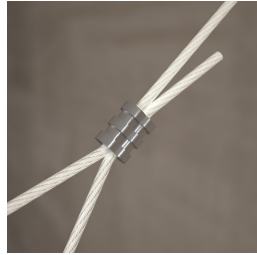
- Cut to length as needed
- Pre-stretched restraint cable



Part Number	Brace Size	Diameter	Cable Length	UL Listed Load	Color	Certifications
Material: Steel – Finish: Pregalvanized, Painted						
CSB12CBL	#12	3/32"	250'	600 lb	Red	UL
CSB18CBL	#18	1/8"	250'	1,100 lb	White	UL
CSB36CBL	#36	3/16"	250'	2,800 lb	Blue	UL
CSB48CBL	#48	1/4"	250'	4,600 lb	Yellow	UL
Material: Stainless Steel 316 [EN 1.4401]						
CSB12CBLSS	#12	3/32"	250'	-	-	-
CSB18CBLSS	#18	1/8"	250'	-	-	-
CSB36CBLSS	#36	3/16"	250'	-	-	-
CSB48CBLSS	#48	1/4"	250'	-	-	-

Cable is powder coated.

Oval Sleeve

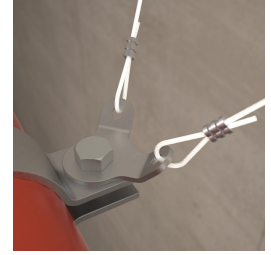
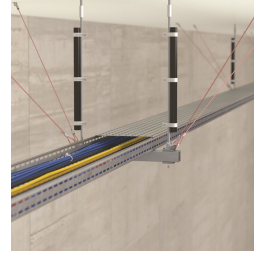
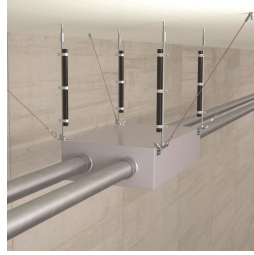
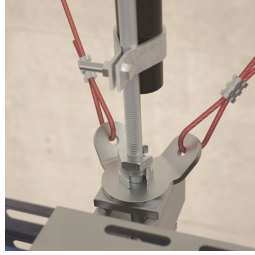


- Creates secure loop ends
- Swage with swaging tools

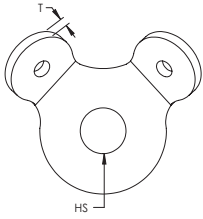
Part Number	Brace Size
Material: Copper – Finish: Electrogalvanized	
CSB12SLVB	#12
CSB18SLVB	#18
CSB36SLVB	#36
CSB48SLVB	#48
Material: Stainless Steel 316 [EN 1.4401]	
CSB12SLVBSS	#12
CSB18SLVBSS	#18
CSB36SLVBSS	#36
CSB48SLVBSS	#48

Two side-by-side swages required on #12 and #18 cable. Three side-by-side swages required on #36 and #48 cable.
Check swage with gauge (not included).

Universal Restraint Clip



- Attaches cable brace to structure



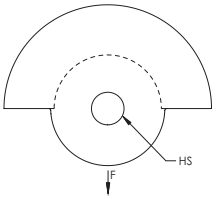
Part Number	Brace Size	Hole Size HS	Thickness T	UL Listed Load	Certifications
Material: Steel - Finish: Electrogalvanized					
CSBURC14	#12, #18, #36	5/16"	0.168"	1,600 lb	UL
CSBURC38	#12, #18, #36	7/16"	0.168"	1,600 lb	UL
CSBURC12	#12, #18, #36	9/16"	0.168"	1,600 lb	UL
CSBURC58	#12, #18, #36	11/16"	0.168"	1,600 lb	UL
CSBURC34	#12, #18, #36	13/16"	0.168"	1,600 lb	UL
CSBURC78	#12, #18, #36	15/16"	0.168"	1,600 lb	UL
CSBURC4812	#48	9/16"	0.250"	4,600 lb	UL
CSBURC4858	#48	11/16"	0.250"	4,600 lb	UL
CSBURC4834	#48	13/16"	0.250"	4,600 lb	UL
Material: Stainless Steel 316 [EN 1.4401]					
CSBURC14SS	#12, #18, #36	5/16"	0.168"	-	-
CSBURC38SS	#12, #18, #36	7/16"	0.168"	-	-
CSBURC12SS	#12, #18, #36	9/16"	0.168"	-	-
CSBURC58SS	#12, #18, #36	11/16"	0.168"	-	-
CSBURC34SS	#12, #18, #36	13/16"	0.168"	-	-
CSBURC78SS	#12, #18, #36	15/16"	0.168"	-	-

Mount to the structure using the center hole. Loop cable through the holes in the bent tabs and swage in place.

No Pry Clip



- Eliminates prying effect on fasteners and anchors

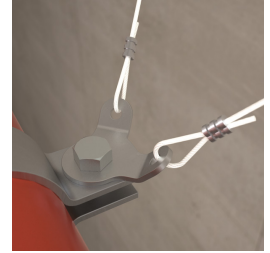
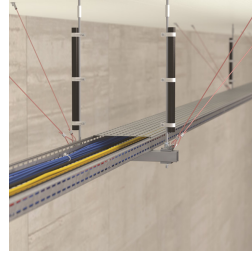
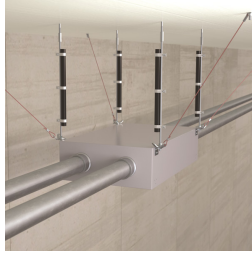
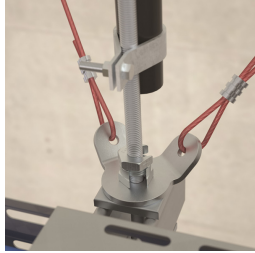


Material: Steel
Finish: Electrogalvanized



Part Number	Brace Size	Hole Size HS	UL Listed Load
CSBNPC38	#12, #18, #36	7/16"	2,800 lb
CSBNPC12	#12, #18, #36	9/16"	2,800 lb
CSBNPC58	#12, #18, #36	11/16"	2,800 lb
CSBNPC34	#12, #18, #36	13/16"	2,800 lb

URC Attachment Kit



- Attaches cable brace to structure
- Two-way bracing kit with oval sleeves
- Wraps around structural steel members

Material: Steel
Finish: Electrogalvanized, Painted

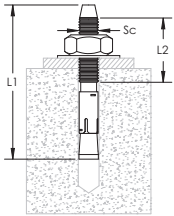


Part Number	Hole Size	Brace Length	Cable Length	UL Listed Load
Brace Size: #12 - Color: Red				
CSB2W12URC38L10	7/16"	10'	14'	600 lb
CSB2W12URC38L20	7/16"	20'	24'	600 lb
CSB2W12URC12L10	9/16"	10'	14'	600 lb
CSB2W12URC12L20	9/16"	20'	24'	600 lb
Brace Size: #18 - Color: White				
CSB2W18URC38L10	7/16"	10'	14'	1,100 lb
CSB2W18URC38L20	7/16"	20'	24'	1,100 lb
CSB2W18URC12L10	9/16"	10'	14'	1,100 lb
CSB2W18URC12L20	9/16"	20'	24'	1,100 lb
Brace Size: #36 - Color: Blue				
CSB2W36URC12L10	9/16"	10'	14'	1,600 lb
CSB2W36URC12L20	9/16"	20'	24'	1,600 lb
CSB2W36URC58L10	11/16"	10'	14'	1,600 lb
CSB2W36URC58L20	11/16"	20'	24'	1,600 lb
Brace Size: #48 - Color: Yellow				
CSB2W48URC12L10	9/16"	10'	14'	3,500 lb
CSB2W48URC12L20	9/16"	20'	24'	3,500 lb
CSB2W48URC58L10	11/16"	10'	14'	3,500 lb
CSB2W48URC58L20	11/16"	20'	24'	3,500 lb

Wedge Expansion Anchor Bolt



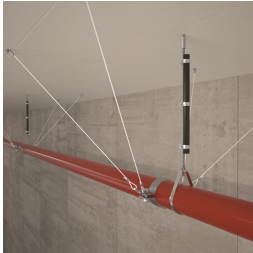
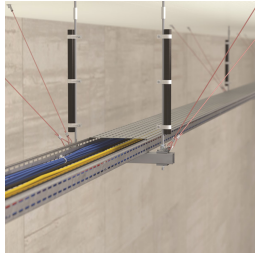
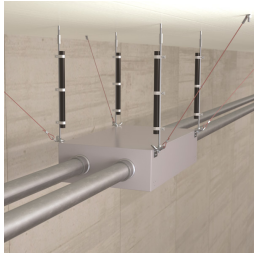
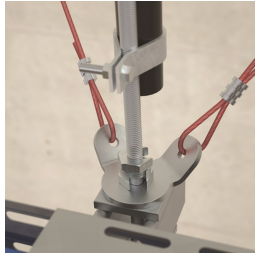
- ICC® approved for use in cracked and uncracked concrete
- Includes nut and washer
- Meets NFPA® 13 as pre-qualified for seismic applications



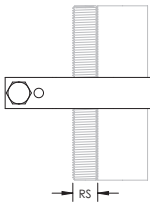
Material: Steel
Finish: Electrogalvanized

Part Number	Screw Diameter Sc	Length 1 L1	Length 2 L2	Drill Bit Diameter	Torque TQ
CSBCAB030037EG	3/8"	3"	1 3/4"	3/8"	20 ft lb
CSBCAB037550EG	1/2"	3 3/4"	2 1/8"	1/2"	40 ft lb
CSBCAB045050EG	1/2"	4 1/2"	2 7/8"	1/2"	40 ft lb
CSBCAB055050EG	1/2"	5 1/2"	3 7/8"	1/2"	40 ft lb
CSBCAB047562EG	5/8"	4 3/4"	2 7/8"	5/8"	60 ft lb
CSBCAB060062EG	5/8"	6"	4 1/8"	5/8"	60 ft lb
CSBCAB055075EG	3/4"	5 1/2"	3 1/4"	3/4"	110 ft lb
CSBCAB062575EG	3/4"	6 1/4"	4"	3/4"	110 ft lb

Pipe Rod Stiffener

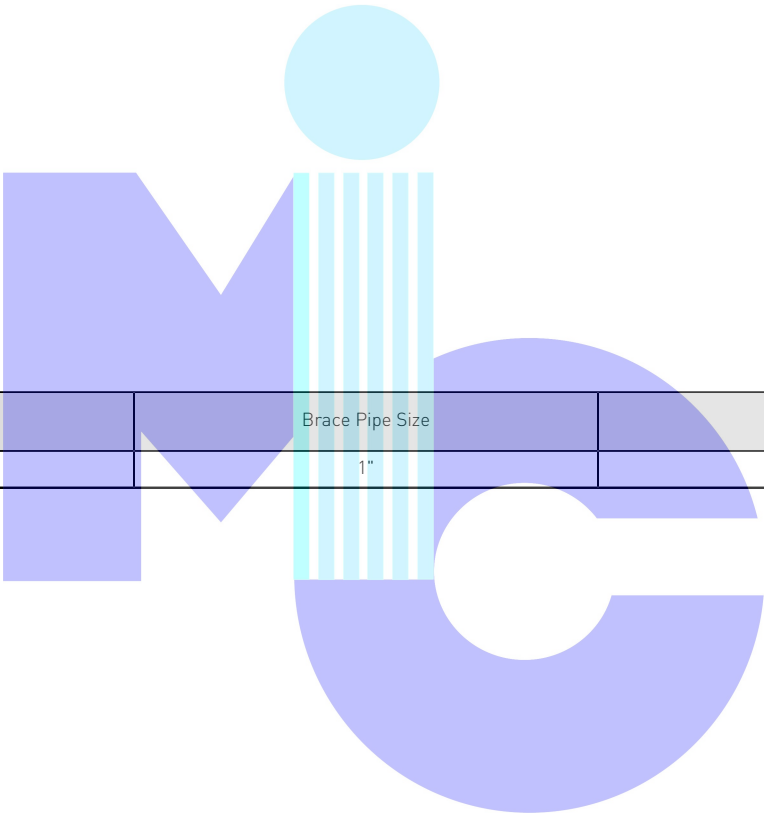


- For use with Schedule 40 or Schedule 10 pipe
- Secures pipe to threaded rod for stiffening



Material: Steel
Finish: Electrogalvanized

Part Number	Brace Pipe Size	Rod Size RS
CSBRS1	1"	3/8", 1/2", 5/8"



Cable Cutter

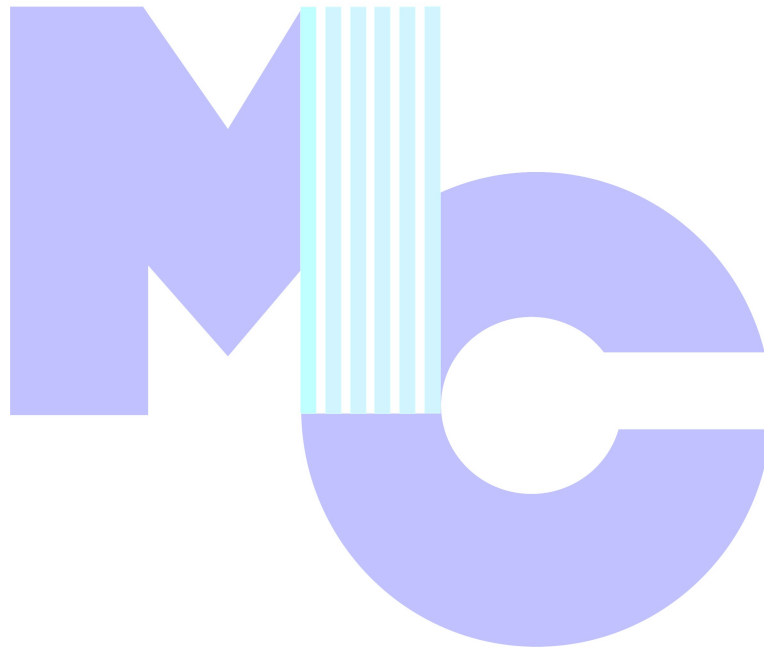


- Designed to reduce cable fraying

Material: Steel

Part Number	Brace Size
CSBC48	#36, #48

For brace sizes #12 and #18 use SLWC Wire Rope Cutter.

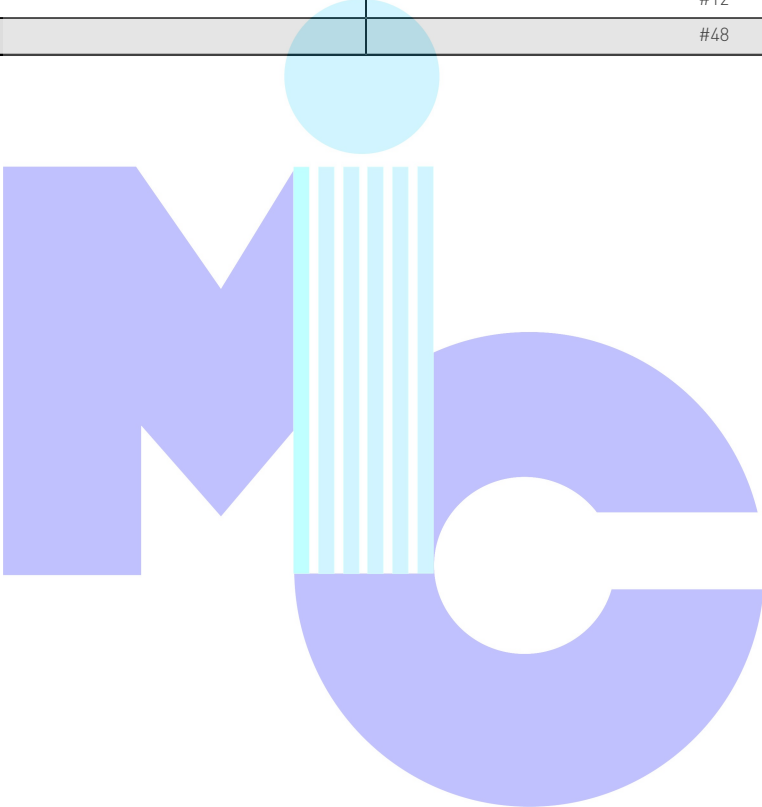


Manual Swaging Tool



Material: Steel

Part Number	Brace Size
CSB12SBHS	#12
CSB48	#48

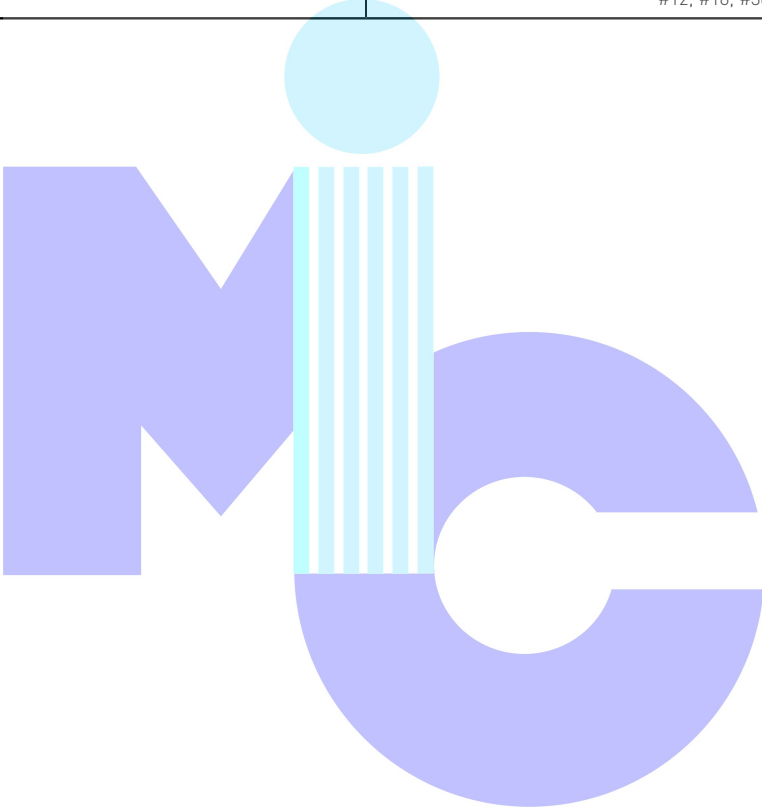


Multi-Size Manual Swaging Tool



Material: Steel

Part Number	Brace Size
CSB3346SB	#12, #18, #36



Battery-Operated Swaging Tool

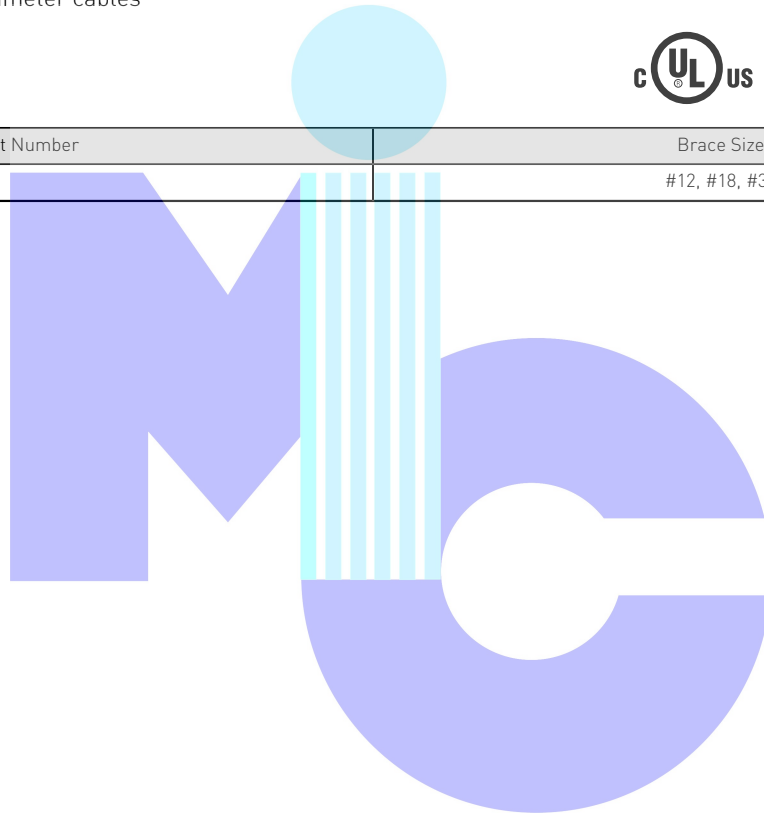


- Battery-operated tool provides consistent swaging
- Provides less strenuous installation when compared to manual swaging tools
- Cordless design allows installers to easily move around the job site
- Compatible with large diameter cables

Material: Steel



Part Number	Brace Size
CSBBS121836	#12, #18, #36



FM is a registered certification mark of FM Approvals LLC, LTD. ICC is a registered trademark of International Code Council. NFPA is a registered trademark of National Fire Protection Association, Inc. UL, UR, cUL, cUR, cULus and cURus are registered certification marks of UL LLC.

WARNING

nVent products shall be installed and used only as indicated in nVent’s product instruction sheets and training materials. Instruction sheets are available at www.ericco.com and from your nVent customer service representative. Improper installation, misuse, misapplication or other failure to completely follow nVent’s instructions and warnings may cause product malfunction, property damage, serious bodily injury and death and/or void your warranty.

© 2019 nVent All rights reserved

nVent, nVent CADDY, nVent ERICO, nVent ERIFLEX and nVent LENTON are owned by nVent or its global affiliates.

All other trademarks are the property of their respective owners. nVent reserves the right to change specifications without prior notice.

